

CONCEPT

As audio sources have few specificities, I let them as they are (except Radio which contains channels) and focused on Video sources.

Line 4:

This line is common to all video sources: All lights on – P&P – Clock.

Line 3:

For most video sources: the centre key is AV menu.

External keys are reserved for source-specific functions or colour-key functions (red – blue).

Lines 1 & 2:

If the source contains channels, 6 favourite channels are shown there.

If the source contains colour-key functions, external keys are Green and Yellow (line 1).

Sat source:

This source contains far more channels than the 50 permitted by the software.

So a special "chaînes" menu contains links to 12 logo-pages, on a thematic basis. The target was to have one logo-page per theme.

In order to keep them in all configuration changes, I included this menu as a part of a personal XML template of my STB.

Furthermore, this way of doing enables me to find this menu and associated logos when I call P&P/SAT in any video sources.

P&P Menu:

Sources are shown as they appear on the main menu page (of course, the source in which P&P has been asked is not shown).

The secondary source menu appears as it is on the main page, but non-relevant functions are removed.

Line 4 is changed: All lights on – Exit - Swap

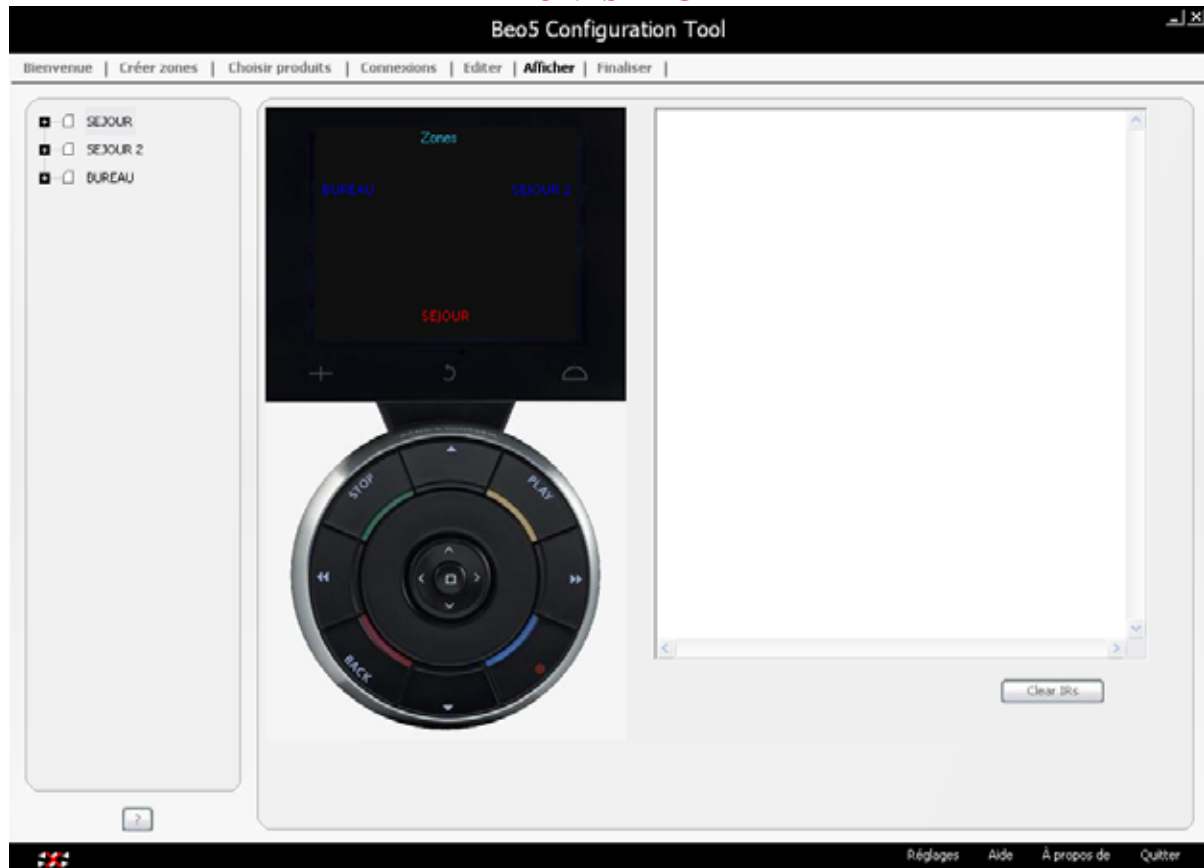
AV Menu:

Present on video sources only (on page 2 if line 3 centre key is not available).

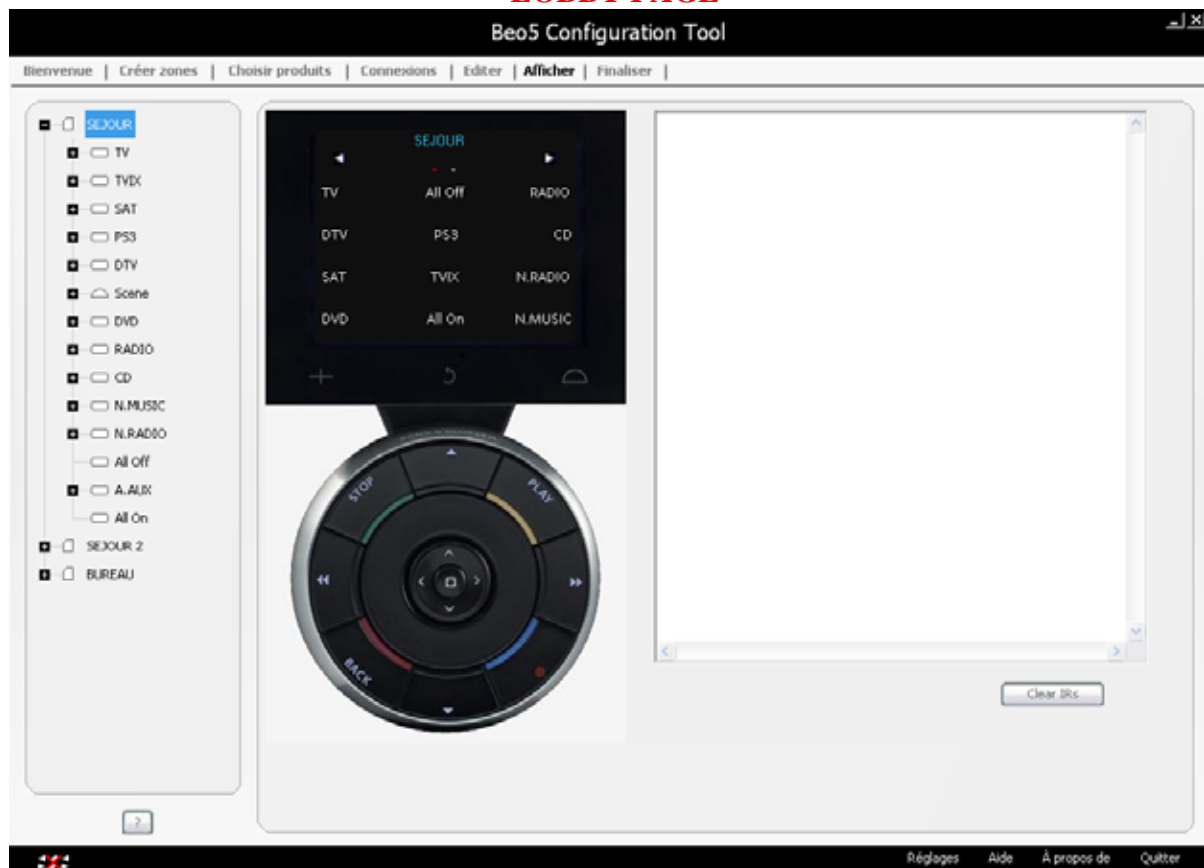
Audio sources are shown on the same way they appear on the main menu page.

The "Exit" command is added to go back to the Video source (line 4 – centre).

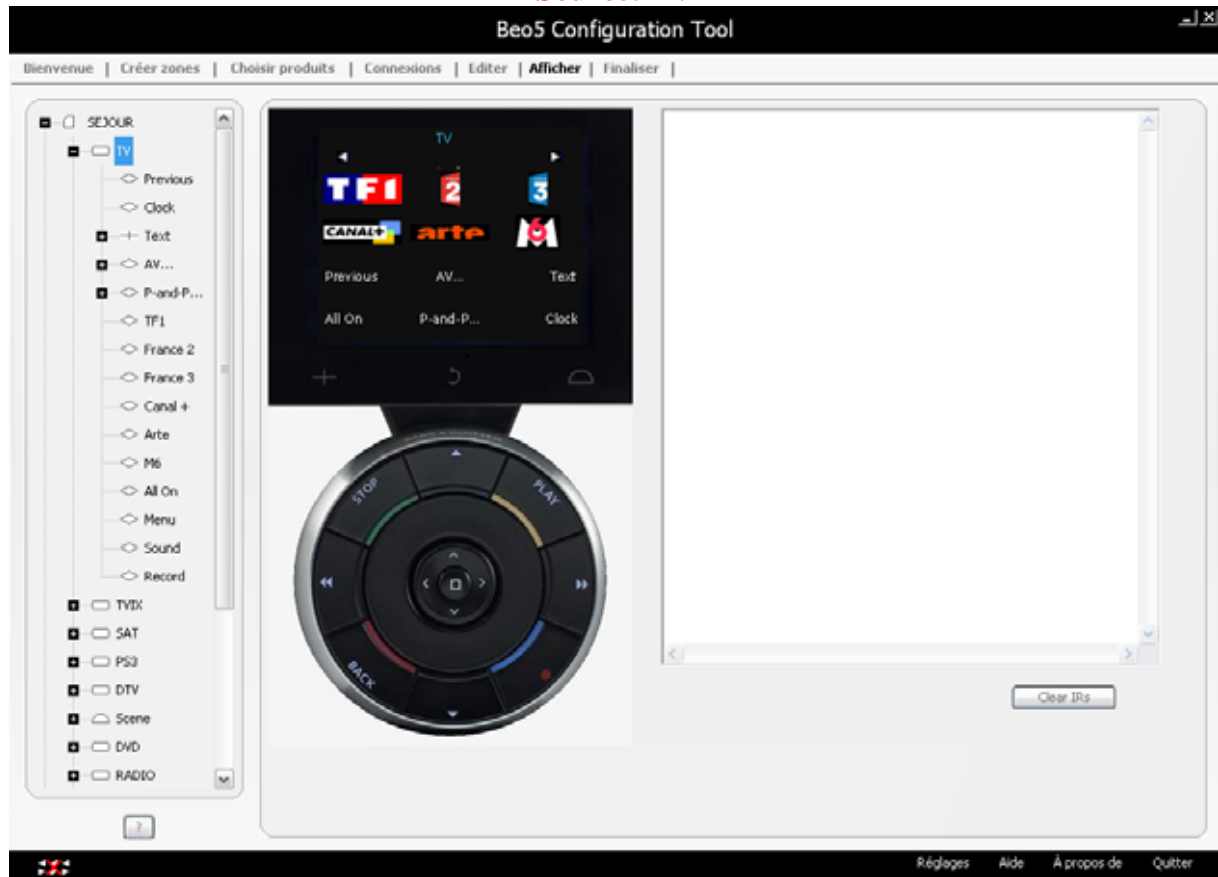
ZONES PAGE



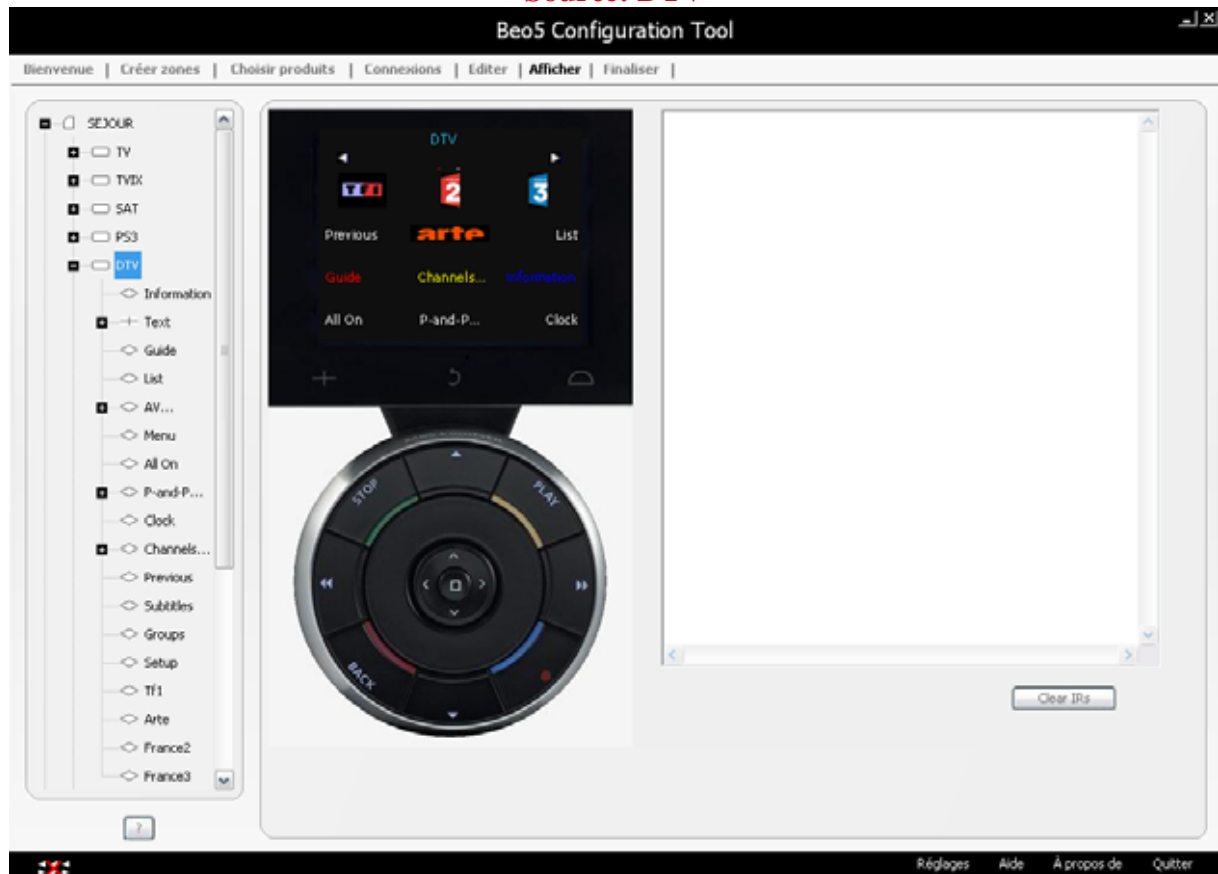
LOBBY PAGE



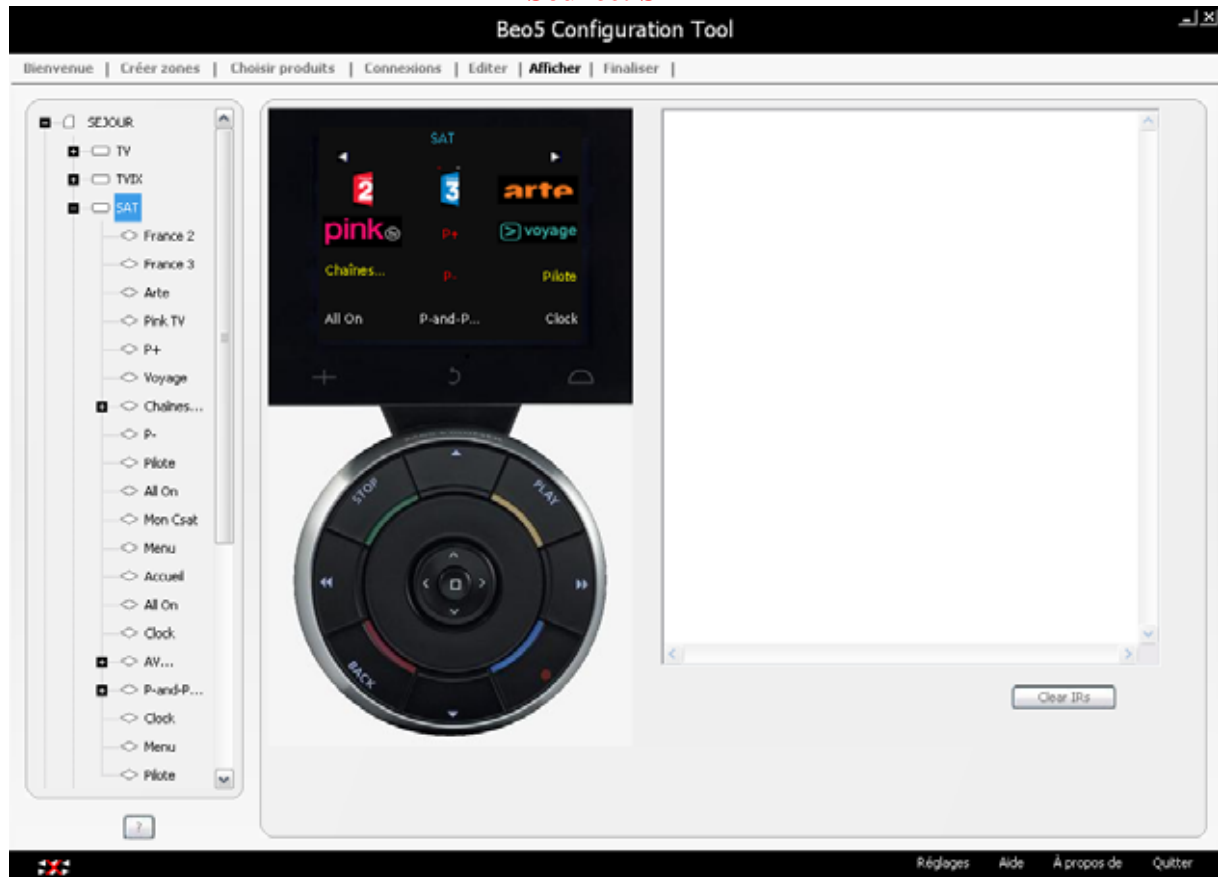
Source: TV



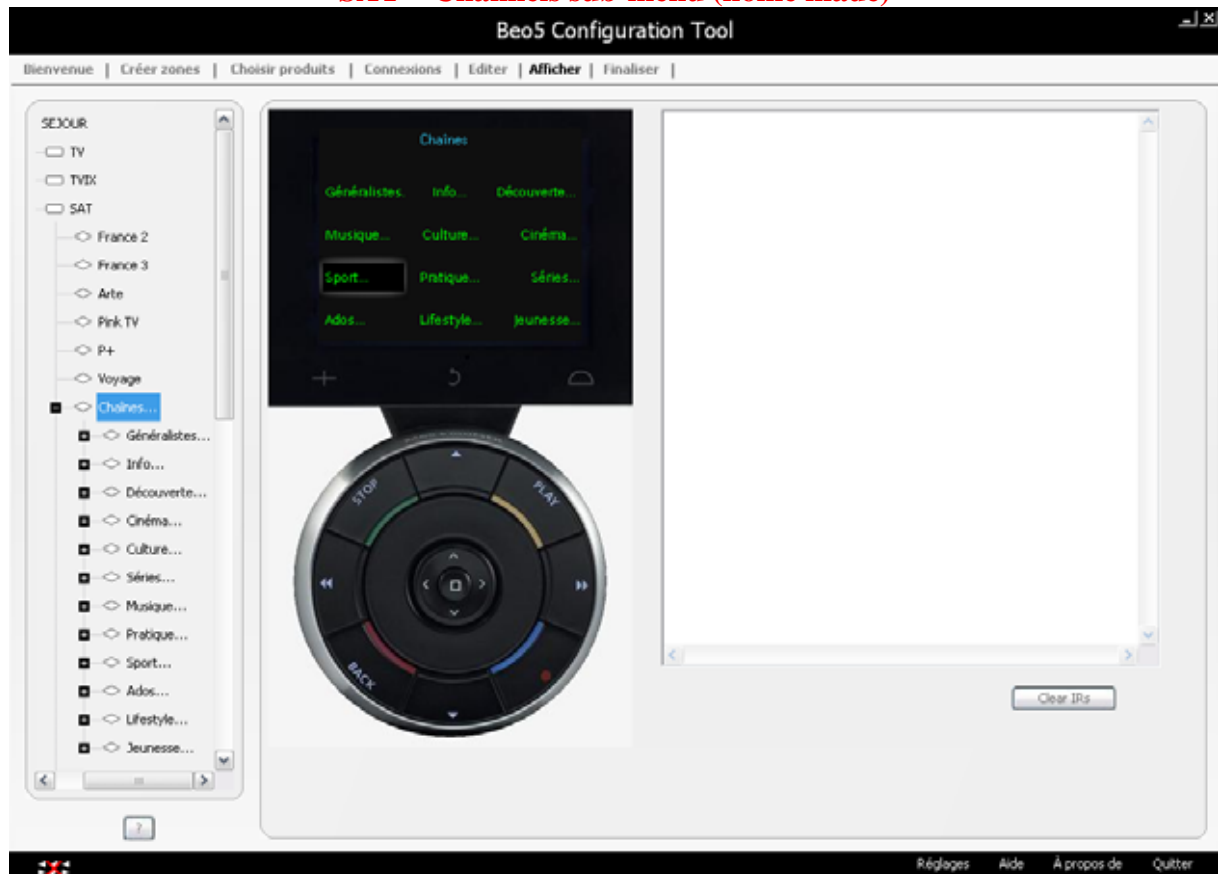
Source: DTV



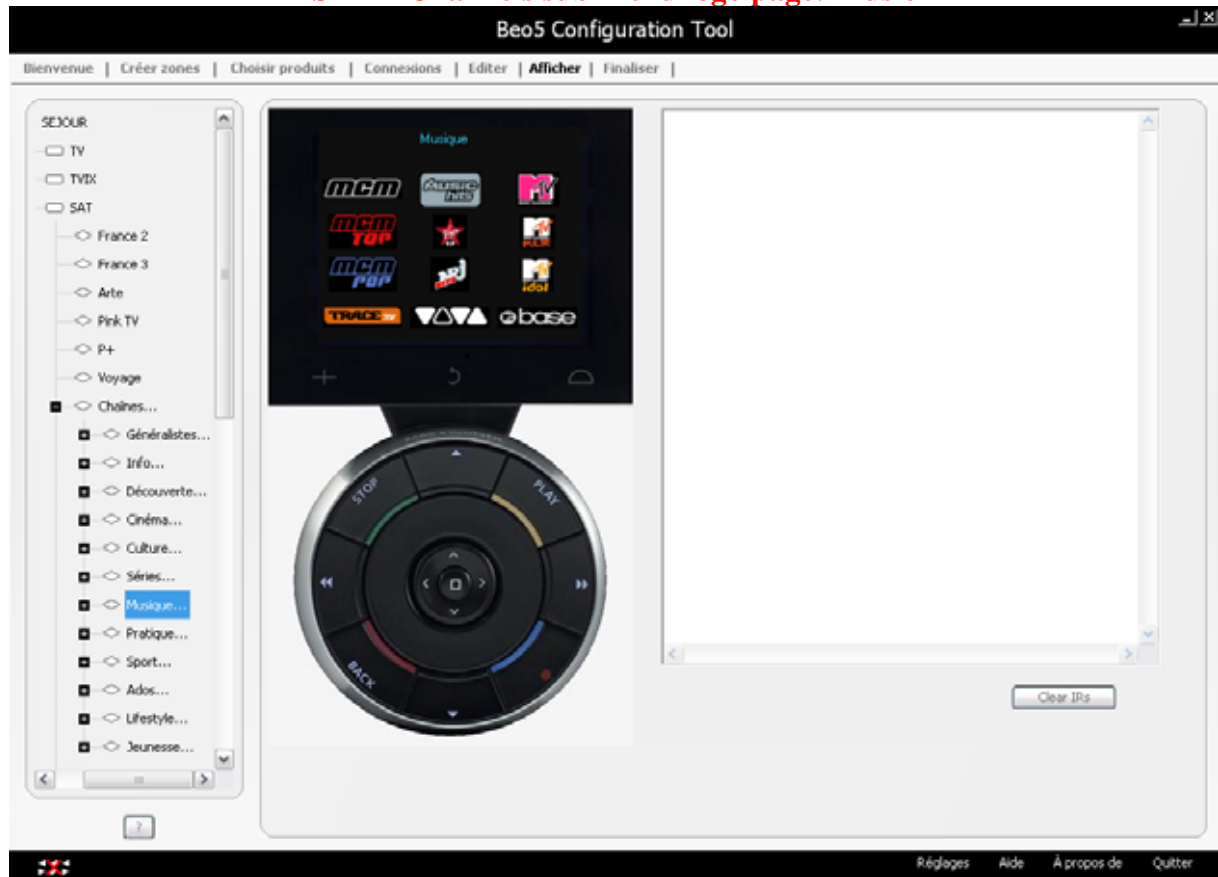
Source: SAT



SAT – Channels sub-menu (home made)



SAT – Channels sub-menu logo page: Music



Source: DVD

